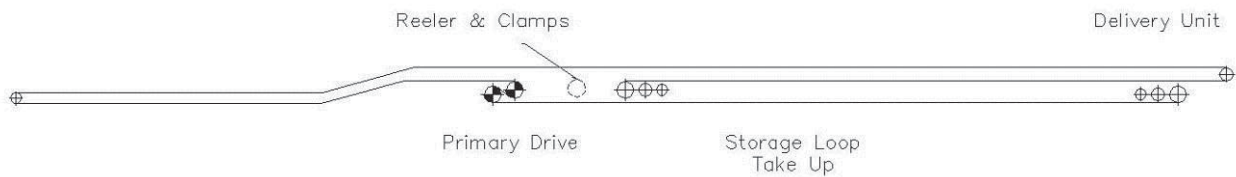


Proposal

Store Norske Spitsbergen Grubekompani A/S

Proposal Ref.: 20659664 Rev 6
17th January 2013

Conveyor BT6 Design Parameters (See Also GA3309)



Material:			
Bulk Density	Assumed	1000 kg/m ³	
Moisture Content	Unknown		
Lump Size	Assumed	Max 150 mm	
Environment:			
Maximum Temperature	Given	0° C	
Minimum Temperature	Given	-10°	
Location		Coal mine ~ very arduous conditions etc.	
Phase		Development Phase	Production Phase
Duty (Conveying Rate)	Tonne/hour	300	1500
Belt Width	mm	1400	
Belt Speed	m/sec	3.00	
Idle Roller Diameter	mm	127	
Details			
Total Length	metres	1164	950
Total Lift/Fall	metres	-140	-97
Belt Rating	Kn./m	1400	
Calculated Motor Power	kW	2 x 120	2 x 120
Installed Hydraulic Motor		2 x CA210	
Installed Motor Power	kW	2 x 224	
Maximum Belt Tension	Kn./m	125.1	
Belting Factor of safety	:1	11.19	
Brake Required		Yes	