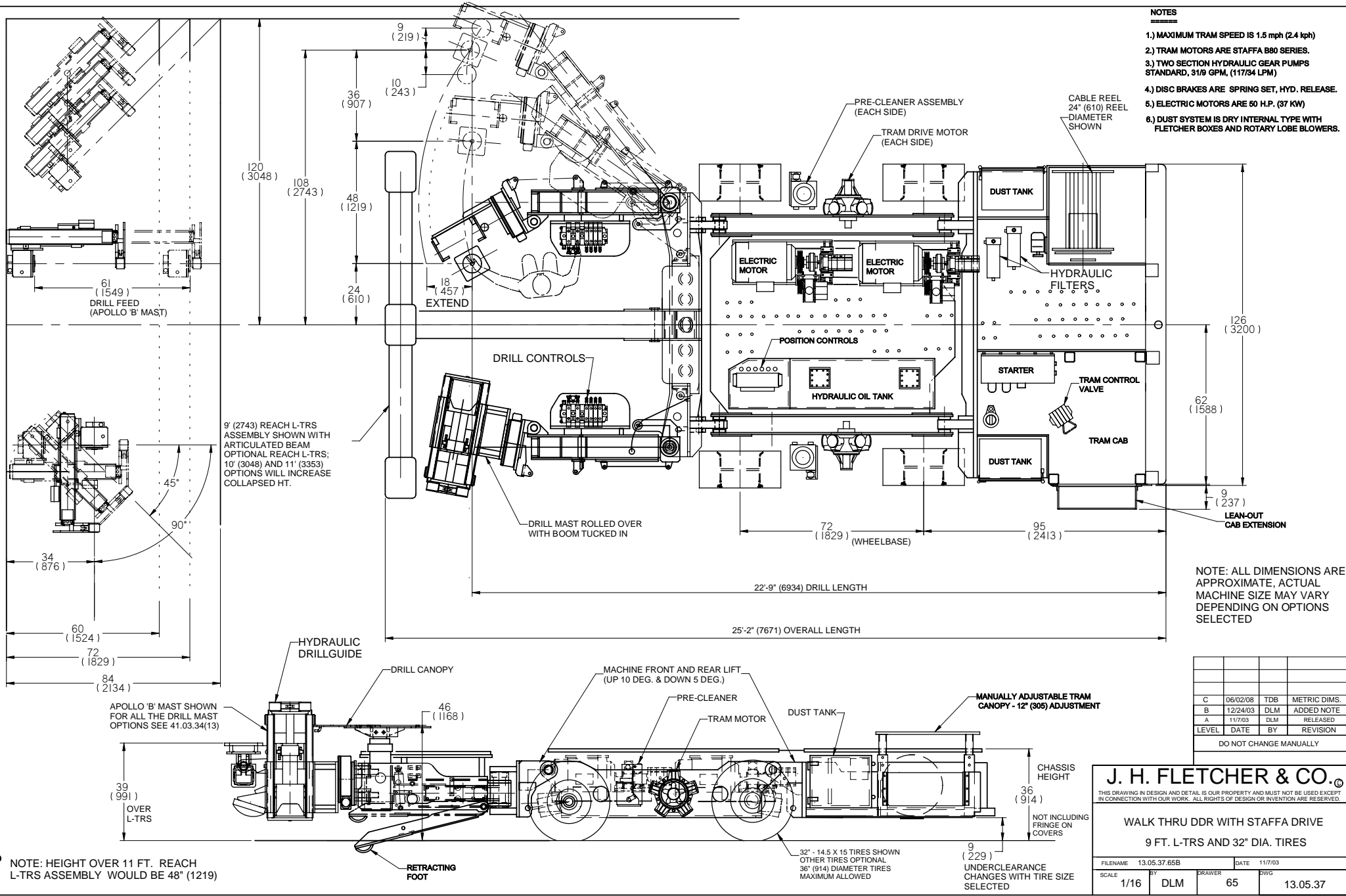


**NOTES**

- 1.) MAXIMUM TRAM SPEED IS 1.5 mph (2.4 kph)
- 2.) TRAM MOTORS ARE STAFFA B80 SERIES.
- 3.) TWO SECTION HYDRAULIC GEAR PUMPS STANDARD, 31/8 GPM, (117/34 LPM)
- 4.) DISC BRAKES ARE SPRING SET, HYD. RELEASE.
- 5.) ELECTRIC MOTORS ARE 60 H.P. (37 KW)
- 6.) DUST SYSTEM IS DRY INTERNAL TYPE WITH FLETCHER BOXES AND ROTARY LOBE BLOWERS.



NOTE: ALL DIMENSIONS ARE APPROXIMATE, ACTUAL MACHINE SIZE MAY VARY DEPENDING ON OPTIONS SELECTED

C	06/02/08	TDB	METRIC DIMS.
B	12/24/03	DLM	ADDED NOTE
A	11/7/03	DLM	RELEASED
LEVEL	DATE	BY	REVISION
DO NOT CHANGE MANUALLY			

**J. H. FLETCHER & CO. ©**

THIS DRAWING IN DESIGN AND DETAIL IS OUR PROPERTY AND MUST NOT BE USED EXCEPT IN CONNECTION WITH OUR WORK. ALL RIGHTS OF DESIGN OR INVENTION ARE RESERVED.

**WALK THRU DDR WITH STAFFA DRIVE**  
9 FT. L-TRS AND 32" DIA. TIRES

FILENAME	13.05.37.65B	DATE	11/7/03
SCALE	1/16	DRAWER	65
BY	DLM	DWG	13.05.37

© NOTE: HEIGHT OVER 11 FT. REACH L-TRS ASSEMBLY WOULD BE 48" (1219)