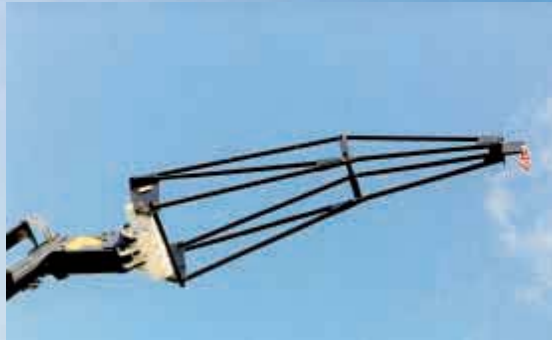


WINCH MAN PLATFORM



PALLET FORKS EXTENSION JIB

Radio control

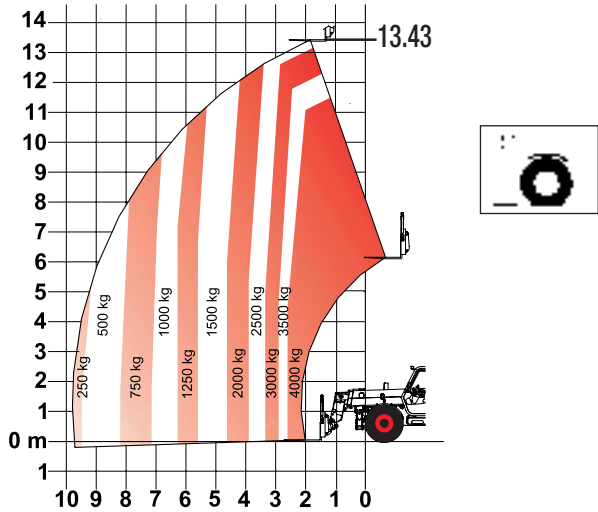
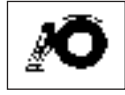
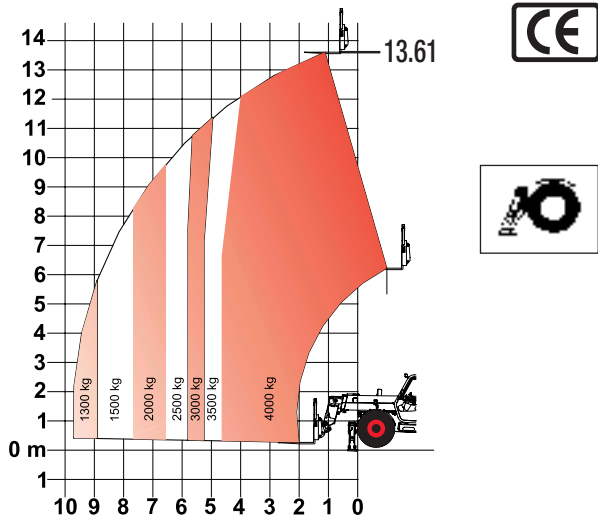


With the winch as well as other attachments such as the crane jib or pallet forks, radio control not only is convenient but also significantly increases productivity as the operator can carry out manoeuvres remotely and in complete safety. Used on the man platform, the radio control system can position the platform anywhere in the working area.



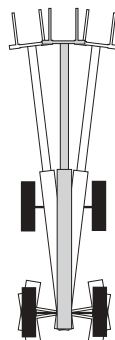
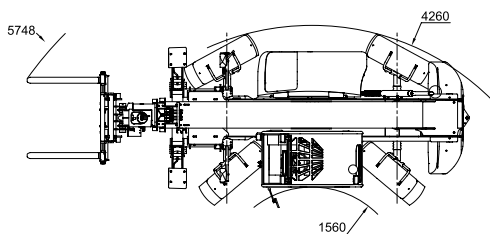
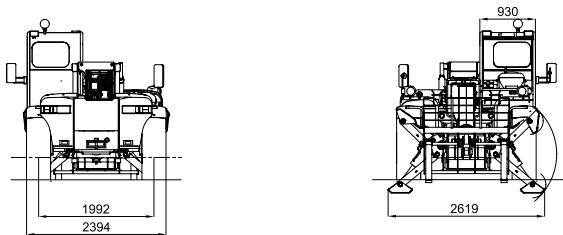
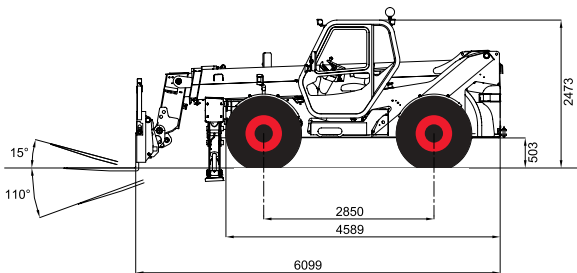
T40140

LIFTING CAPACITIES



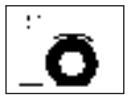
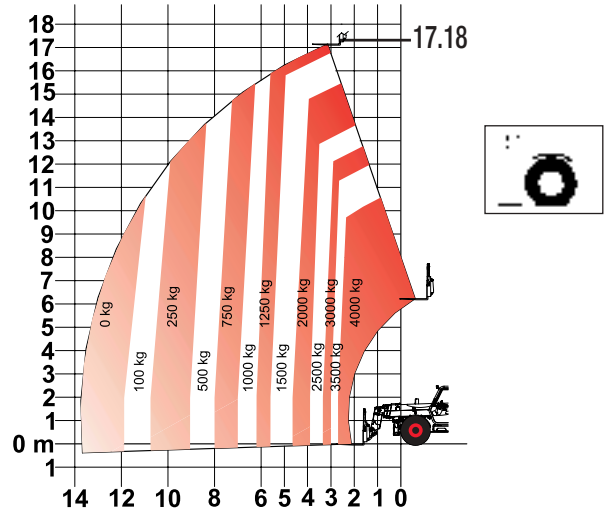
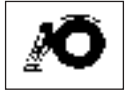
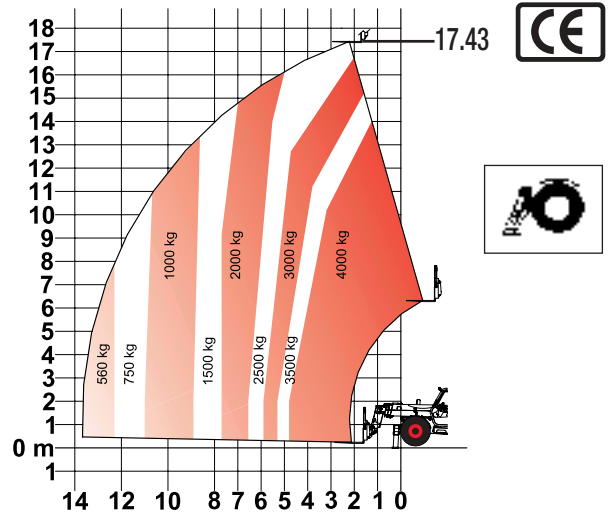
DIMENSIONS

All dimensions are in mm.



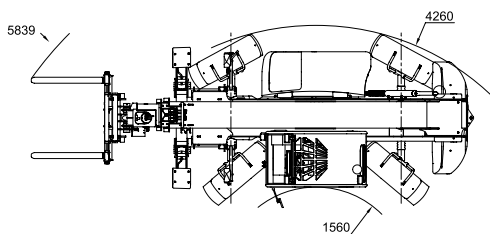
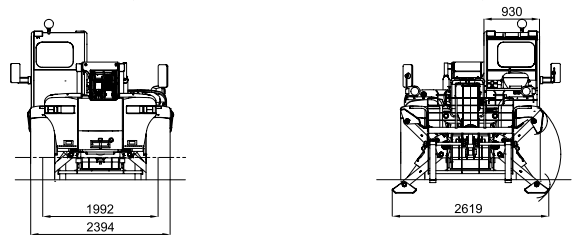
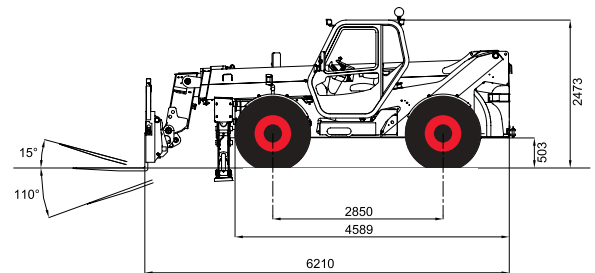
T40170

LIFTING CAPACITIES



DIMENSIONS

All dimensions are in mm.



T40140

RATED CAPACITY	4000 kg
LIFTING HEIGHT	13610 mm
MAXIMUM REACH	9700 mm
CAPACITY at max. height	4000 kg
at max. reach	1300 kg
CROWDING FORCE	5000 daN
WEIGHT (unladen)	10010 kg
FRAME LEVELING DEVICE	± 4°
SIDE SHIFT	1400 mm



FUNCTION TIME

	Seconds
Lift speed	13
Lower speed	7.2
Telescope in	11
Telescope out	19.2
Crowding	4.6
Dumping	3.8



4X4X4 DRIVE SYSTEM

4 DRIVE AND STEERING WHEELS OF EQUAL SIZE
MOBILITY AND MOTION THROUGH 2 AUTOMATIC STEERING AXLES
2WS/4WS/CRAB
THE STEERING MODE IS SELECTED FROM THE OPERATOR'S CAB



TYRES

Standard	400/80x24	153B
----------	-----------	------



BRAKES

ENGINE BRAKING	Hydrostatic
MAIN BRAKES	Immersed disk brakes acting on both axles
PARKING AND EMERGENCY BRAKES	Negative mechanical acting on both axles



ENGINE

TYPE	PERKINS 1004.40T (Turbo) Diesel 4 cylinder / 3990 cc DIRECT INJECTION WATER COOLING		
POWER AT 2200 RPM ISO/TR 14396	HP	kW	
	100	74.5	
MAX. TORQUE	402 Nm at 1400 rpm		



HYDROSTATIC TRANSMISSION

2 DRIVING MODES (direct drive/soft drive)	
2 SPEED RANGES (forward and reverse)	
Working	0 to 7 km/h
Travel	0 to 30 km/h
- Accelerator pedal for automatic gear variation	
- Single pedal for inching and braking	



HYDRAULIC SYSTEM

GEAR TYPE PUMP	
WORKING PRESSURE	250 bar
COMBINED FLOW	142 l/min



CAPACITIES

HYDRAULIC SYSTEM	140 l
FUEL TANK	140 l
AXLES AND REDUCTION GEARS	11.9 l
ENGINE OIL	6.5 l



ATTACHMENTS

Digging and reclaim bucket (900 l) - Extension jib - Crane jib - Concrete bucket (mechanical or hydraulic opening) - Trailer hook - Man platform - Winch remote control

T40170

RATED CAPACITY	4000 kg
LIFTING HEIGHT	17430 mm
MAXIMUM REACH	13670 mm
CAPACITY at max. height	2500 kg
at max. reach	560 kg
CROWDING FORCE	5000 daN
WEIGHT (unladen)	10970 kg
FRAME LEVELING DEVICE	± 4°
SIDE SHIFT	1792 mm



FUNCTION TIME

	Seconds
Lift speed	12.6
Lower speed	6.4
Telescope in	16.6
Telescope out	28.9
Crowding	4.7
Dumping	4.5



4X4X4 DRIVE SYSTEM

4 DRIVE AND STEERING WHEELS OF EQUAL SIZE
MOBILITY AND MOTION THROUGH 2 AUTOMATIC STEERING AXLES
2WS/4WS/CRAB
THE STEERING MODE IS SELECTED FROM THE OPERATOR'S CAB



TYRES

Standard	400/80x24	156B
----------	-----------	------



BRAKES

ENGINE BRAKING	Hydrostatic
MAIN BRAKES	Immersed disk brakes acting on both axles
PARKING AND EMERGENCY BRAKES	Negative mechanical acting on both axles



ENGINE

TYPE	PERKINS 1004.40T (Turbo) Diesel 4 cylinder / 3990 cc DIRECT INJECTION WATER COOLING		
POWER AT 2200 RPM ISO/TR 14396	HP	kW	
	100	74.5	
MAX. TORQUE	402 Nm at 1400 rpm		



HYDROSTATIC TRANSMISSION

2 DRIVING MODES (direct drive/soft drive)	
2 SPEED RANGES (forward and reverse)	
Working	0 to 7 km/h
Travel	0 to 30 km/h
- Accelerator pedal for automatic gear variation	
- Single pedal for inching and braking	



HYDRAULIC SYSTEM

GEAR TYPE PUMP	
WORKING PRESSURE	250 bar
COMBINED FLOW	142 l/min



CAPACITIES

HYDRAULIC SYSTEM	153 l
FUEL TANK	140 l
AXLES AND REDUCTION GEARS	11.9 l
ENGINE OIL	6.5 l



ATTACHMENTS

Digging and reclaim bucket (900 l) - Extension jib - Crane jib - Concrete bucket (mechanical or hydraulic opening) - Trailer hook - Man platform - Winch remote control

BOBCAT EUROPE

J. Huysmanslaan, 59
B - 1651 LOT Belgium
Tel. +32 (0)2 371 68 11
Fax. +32 (0)2 371 69 01
E-mail: bobcat_europe@eu.bobcat.com
www.bobcat.com

An **IR Ingersoll Rand** business

