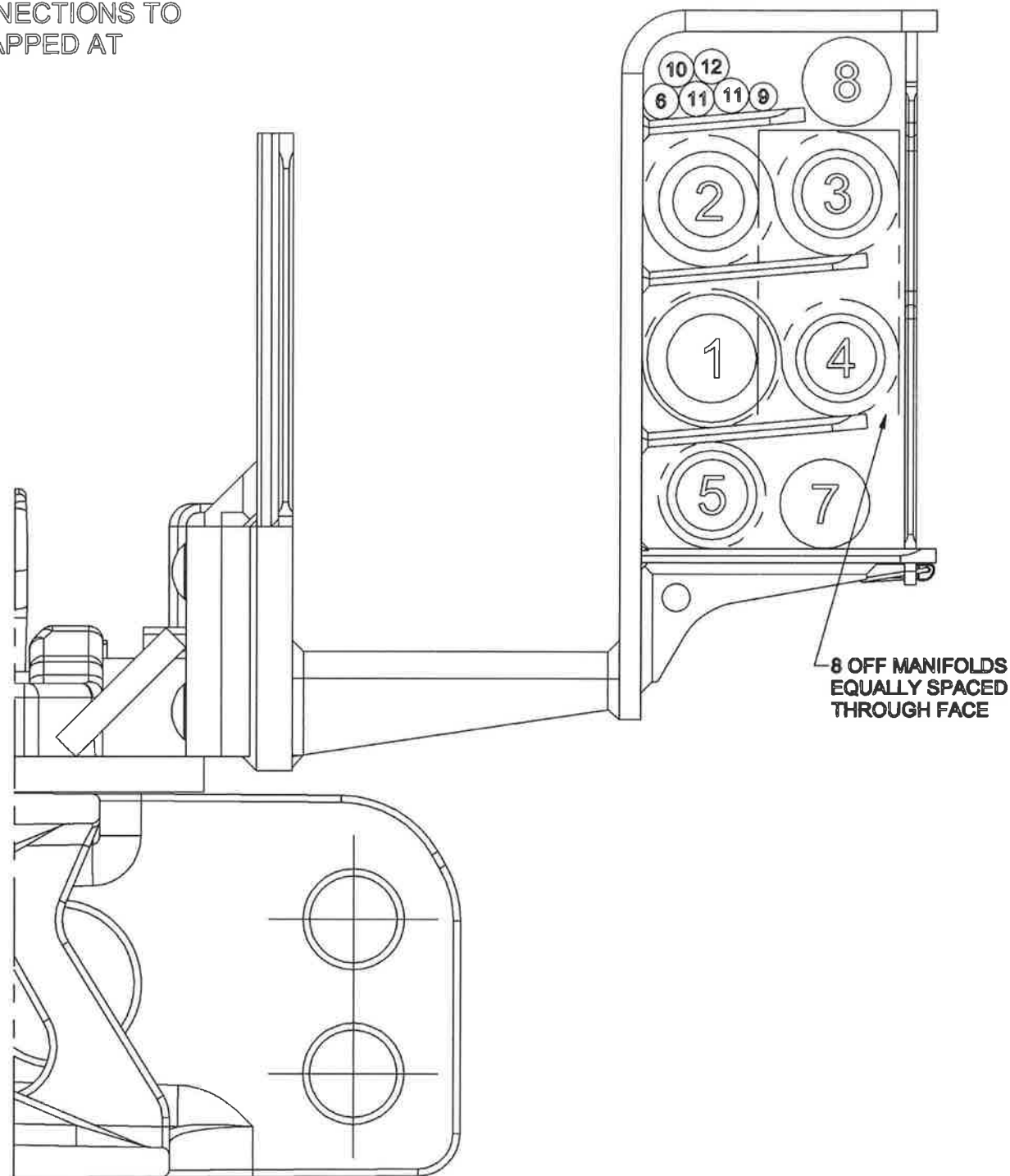
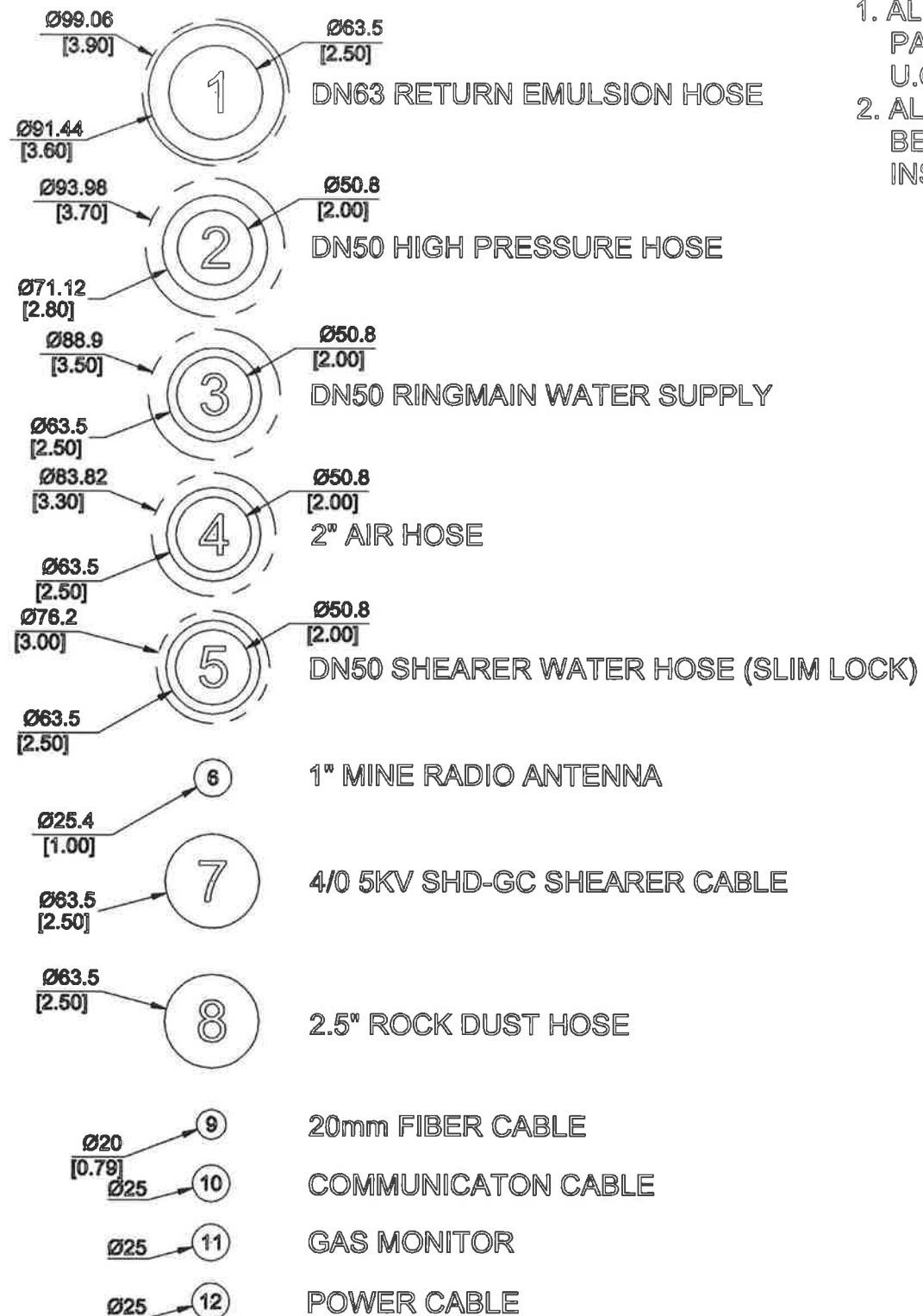


NOTES:  
 1. ALL COUPLINGS SHOWN AS PARKER STD FITTINGS U.O.S.  
 2. ALL HOSE CONNECTIONS TO BE SPIRAL WRAPPED AT INSTALLATION



JOY MINING MACHINERY  
 1998 ALL RIGHTS RESERVED

THIS DRAWING IS THE PROPERTY OF JOY MINING MACHINERY AND IS CONFIDENTIAL. IT IS ISSUED SUBJECT TO THE CONDITIONS THAT:  
 (1) THE INFORMATION OR ANY PART THEREOF CONTAINED IN IT SHALL NOT BE DISCLOSED IN ANY FORM TO A THIRD PARTY.  
 (2) IT OR ANY PART OF IT SHALL NOT BE REPRODUCED IN ANY FORM.

GENERAL NOTES

- WELDING SYMBOLS STANDARD TO ISO 2553 METHOD A.
- REMOVE ALL BURRS & SHARP EDGES.
- ALL DIMENSIONS IN MILLIMETERS UNLESS OTHERWISE STATED.
- THIRD ANGLE PROJECTION

FINISH SYMBOLS	
SYM	MICRO m
N3	0.1
N4	0.2
N5	0.4
N6	0.8
N7	1.6

TOLERANCES UNLESS OTHERWISE STATED	
MACHINING	ANGULAR
$\pm 0.5$	$\pm 1/2'$
FABRICATION & STRUCTURAL	
UP TO 300	$\pm 1$
301 UP TO 1000	$\pm 2$
1001 UP TO 2000	$\pm 3$
OVER 2000	$\pm 5$

MANUFACTURING SPECIFICATIONS	
PROTECT TREATMENT	FABRICATION TOL'S
-----	MQR-045
FINISH SPEC	
-----	MQR-045
WELDING SPEC	
-----	MQR-045
HEAT TREATMENT	
-----	-----
HARDNESS	
-----	-----

MATERIAL	
MATERIAL CODE	WEIGHT UNITS
-----	kg
ESTIMATED WEIGHT	
-----	**
PLATE INDICATOR	
-----	DRW USE
REPLACED BY	
-----	-----
SIMILAR TO	
-----	-----

VERSION	
CHANGE NO.	DATE
3	JUNE-26-14
1291356	SHEET
RWEAGLE	1 OF 1
AUTOCAD	N.T.S.
MACHINE MODEL	-----

DESIGN LOCATION	
DESIGNER	LOCATION
A1	WORCESTER UK
DESCRIPTION	
HOSE & CABLE LAYOUT	
DWG. NO.	NO.
5100022514	05